

Rates + Rebate Webinar

June 3, 2026



Welcome to the Rates & Rebate Webinar

Presenters today:

- Sarb Verma – rate changes that are taking effect July 1, 2026
- Erin Monaghan – rebate changes that are taking effect July 16, 2026

Please use the Q & A tool box accessed at the bottom of your screen to submit your questions.

We are not able to answer questions about specific applications. Any questions not able to be answered today, will be followed up on.



Home Performance Contractor Network (HPCN)

June 1, 2026

- As of June 1, 2026, customers submitting new applications for solar & battery rebates must use an HPCN member to qualify.
- Thank you to those of you who are already members! If you haven't become a member yet, please register at homeperformance.ca



Rebate Changes

Effective July 16, 2026



Solar & Battery Offer – July 16, 2026

Product	Customer	\$/kW or kWh	Product cost covered (labour + materials)	Maximum Rebate
Solar	Residential	\$1,000 kW	50%	\$5,000
	Business Multi-unit residential buildings			\$10,000
	Social Housing Indigenous Non-Integrated Area			\$50,000
Battery storage with a solar generator	Residential	\$500 kWh	50%	\$5,000
	Business Multi-unit residential buildings			\$10,000
	Social Housing Indigenous Non-Integrated Area			\$50,000



Building eligibility for Social Housing Providers & Indigenous Governing Bodies

The following building types are eligible for up to \$100K for solar & battery:

- Multi-unit residential buildings, including stacked townhomes that are three stories or higher, low-rise and high-rise apartment buildings;
- Side-by-side stacked: duplexes, row homes, or townhomes where the building is served by a single meter;
- Commercial buildings paying Small General Service, Medium General Service rates, or Large General Service rates.

**Individually-metered duplexes, row homes, townhomes, and single-family detached dwellings are eligible for residential rebates.*



Bulk application functionality

Submit multiple applications for single rebate payee

Contractors drafting multiple Self-Generation applications for a project with a single rebate payee will be able to **copy the first application and use it as a template**, saving you time and effort.

Would you like to submit multiple applications?

Would you like to submit multiple applications for a project with a single rebate payee (e.g. Social Housing organization)? If you would like to submit multiple applications for a project with a single rebate payee as a bulk application, you can copy the application you've just filled out and use it as a template. The additional applications should be similar to the one you've just completed with a similar system set up.

Make sure all submissions are included in this bulk application, as you will not be able to add to this bulk application once you complete your last submission.

Please note, bulk applications must be completed in one sitting as they cannot be saved as drafts.

For more information on the landlord and developer application process, please visit our [website](#).

[Yes, copy the information and continue](#)

[No, I'm finished with this application](#)

More information about this functionality will be provided closer to launch



Need-to-know info

Rebates for Indigenous Governing Bodies back in market

- Rebates for Indigenous Governing Bodies include properties on **or** off reserve
- Indigenous Peoples should **not** indicate they are an Indigenous Governing Body when submitting an application
- Respect, permission, and partnership are essential when working in First Nations Communities



Rate Changes

Effective July 1, 2026



Agenda

- Net Metering Rate Closure (Rate Schedule 1289)
- Introduce Customer Generation
 - Self-generation Rate Overview (Rate Schedule 2289)
 - Community Generation Rate Overview (Rate Schedule 2290)
- Application & Process Changes
- Next steps Q & A



Topics not covered in Today's Webinar

- 2024 BC Hydro's Rate Design Application
- BCUC process, documents and decisions
- Rebate eligibility criteria for solar & batteries
 - Peak Saver
- Call for Power



Net Metering Rate Closure (RS 1289)

Topics covered

- Final enrollment date and transition timeline
- Migration pathways
- 2024 Rebate impacts



Net Metering Service Rate - Migration Pathways



Net Metering Service Rate (RS 1289) closes June 30, 2026

Customers who did NOT receive a solar rebate

- Remain on Net Metering Service Rate (RS 1289) for 10 years from their Net Metering Service start date
- Will be migrated to Self-Generation Service Rate (RS 2289) after the 10-year period
- Customers on RS 1289 can expand their systems and remain on RS 1289 for the remainder of their 10-year transition period

Customers who received a solar rebate

- Migrate to RS 2289 on July 1, 2026
- One-time opt-out (for customers who received rebates before Mar 24, 2026): Repay the rebate to stay on the current Net Metering rate for 10 years from the service start date
- A [Rebate Payback table](#) is available to support customers in their decision

- Impacted customers were sent communications in June 1, 2026 regarding these changes.
- New account holders are not eligible for RS 1289 transition.



Introduce Customer Generation

Topics covered

- Customer Generation Brand
- Self-generation Rate (RS 2289)
 - Rate Structure
 - Bill Example
 - Eligibility Criteria
- Community Generation Rate (RS 2290)
 - Rate Structure & participation model
 - Roles & Responsibilities
 - Benefitting customer allocation limits
 - Bill example
 - Eligibility Criteria
- Self-generation Rate and Community Generation Rate
 - Rebate and Incentives
 - Key differences summarized



Overview of Generation Credit Options



Effective July 1, 2026



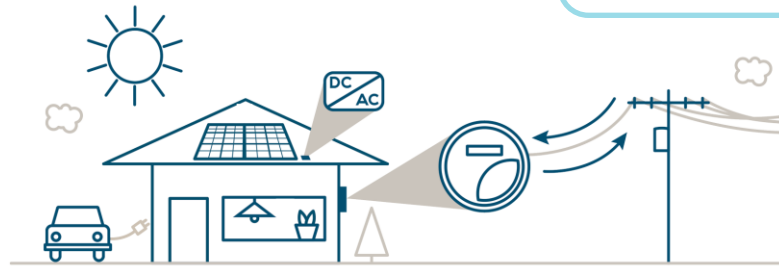
Self-generation Rate (RS 2289)

Rate Structure

- RS 2289 is the new self-generation rate that replaces the former net metering rate (RS 1289).
- Effective July 1, 2026

Under RS 2289, BC Hydro purchases excess generation at a fixed price of 10¢/kWh, paid each billing cycle.

Export limit is 100 kW per phase, with the old nameplate capacity cap removed.



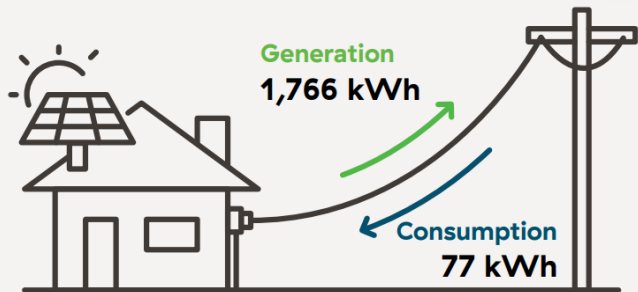
Self-generation Rate Structure (RS 2289)

Bill Example

RS 2289 is designed for customers who primarily offset their own electricity use, with exports occurring only when onsite generation exceeds consumption. Billing is based on net electricity use - total consumption minus onsite generation and any exported energy is credited at 10¢/kWh.

Your self-generation this period

Your smart meter measures how much of our electricity you've consumed, and how much excess generation you've sent to our grid. Here's your self-generation update for this period.



Example:

Consumption = 77 kWh

Generation (to the BCH grid) = 1,766 kWh

Total amount of electricity to be charged / paid = $77 - 1766 = -1,689$ kWh

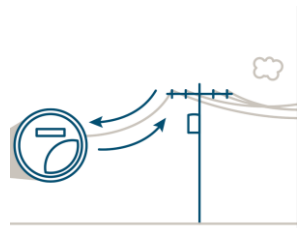
You have generated more than you have consumed

Total dollar amount paid by BCH = $1689 * \$0.10 = \168.90



Self-Generation Rate (RS 2289)

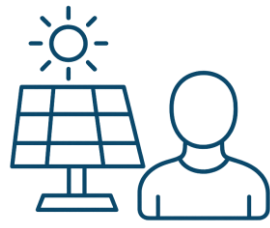
Eligibility Criteria



Must be connected to our BC Hydro distribution system



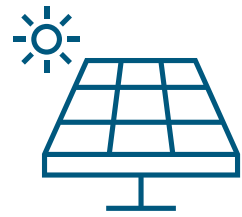
Open to residential & commercial customers



Electricity generators must be owned or leased by the customer and the service is not intended for full-export or wholesale generation



Must use a clean or renewable resource (defined by the Clean Energy Act e.g. solar, wind, hydro, biomass, etc.)



Eligible systems must have a net injection of no more than 100 kW per phase.

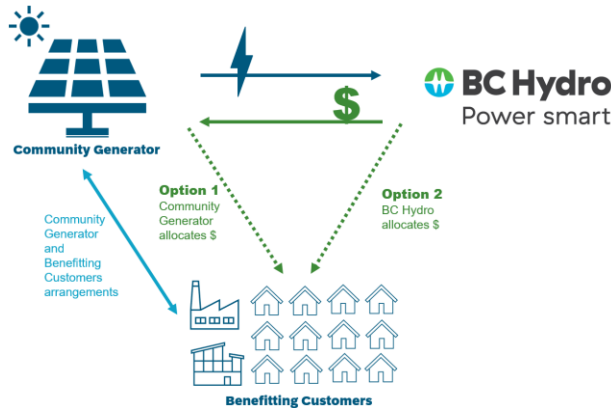


Community Generation Rate (RS 2290)

Rate Structure & Participation Model

- A new net-billing rate enabling customers to subscribe to shared renewable projects and receive bill credits at 10¢/kWh for their share of exported energy. Supports broader access to clean energy with a 2 MW net injection limit.
- Effective July 1, 2026

- A customer (Community Generator) builds and operates a shared generating facility and distributes monetary credits for excess generation to eligible customers (Benefiting Customers) based on an agreed upon percentage allocation.
- As the Community Generator is **NOT distributing electricity** to the Benefiting Customers, they can be located anywhere in B.C.
- BC Hydro will offer an **optional billing service** to administer the allocation of monetary credits to the Benefiting Customers directly.



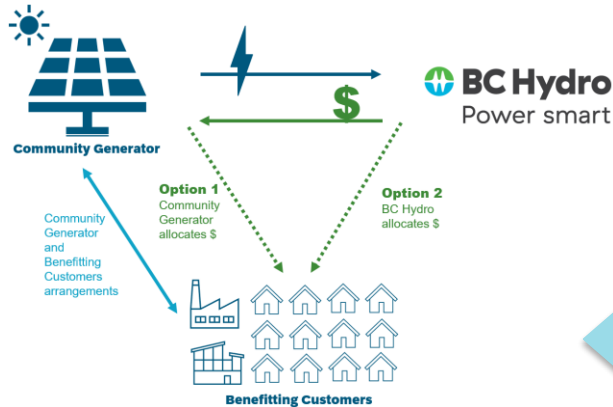
The Maximum Injection Limit of a shared generating facility will be the lesser of:

- A. The sum of:
 - The number of Residential Benefiting Customers multiplied by 24 kW
 - The number of General Service Benefiting Customers multiplied by 100 kW, and
- B. A 2 MW injection limit at the Point of Delivery.

Minimum load is not a requirement for Community Generation; projects will be assessed on net system injection rather than a minimum on-site load.

Community Generation Rate (RS 2290)

Rate Structure & Participation Model



Benefitting customer allocation limits

- If a project had four or fewer Benefitting Customers, no single customer could receive more than 50% of the allocation.
- If a project had more than four Benefitting Customers, no single customer could receive more than 25%.
- A Benefitting Customer could only participate in one Community Generation project at a time.
- Net Metering / Self-Generation customers cannot be benefiting customers simultaneously



Community Generation Rate (RS 2290)

Roles & Responsibilities



BC Hydro

The Community Generation Rate will be owned and administered by BC Hydro, encompassing the design of intake procedures, interconnection processes, and the associated billing system components.

BC Hydro will provide an optional Billing Service to Community Generators; administering the allocation of financial value to Benefitting Customers, including applying credits directly to BC Hydro bills.



Community Generator (CG)

Solicit / recruit Benefitting Customers

Manage financial credits or compensation between CGs and BCs

Oversee internal agreements or financial arrangements between CGs and BCs

Retain records that could be used to confirm eligibility for the rate

Maintain a minimum of two Benefitting Customers



Benefitting Customers (BC)

Receive financial compensation based on their allocated share of the value of the Net Generation from the generating facility and in the format requested by the Community Generator

Must be active BC Hydro customers and may be located anywhere in the province



Community Generation Rate (RS 2290)

Bill Example

Your community generation this period

As a community generation customer, you generate electricity which equates to credits distributed to your benefitting customers.



Generation: 600 kWh

Consumption: 300 kWh

= 300 kWh excess generation to be paid by BCH at \$0.10

= 300 kWh x \$0.10 = **\$30.00 total**

With Optional Billing Service

BC Hydro administers the allocation of monetary credits to the Benefitting Customers on their bills directly based on their percentage allocations

If there are 3 Benefitting Customers & 1 Community Generator Host, each allocated 25%

$$\$30 * 0.25 = \$7.50 \text{ each}$$

\$7.50 appears on each Benefitting Customer's invoice and the CG's invoice

Without Optional Billing Service

Community Generator receives the full Generation Credit amount and distributes it to the Benefitting Customers on their own

\$30 appears on the CG's invoice only

Note: Each billing period or upon Termination of the Service, BC Hydro will credit the Community Generator Customer's Community Generator Account by the Community Generation Credit and apply the resulting CGA Balance to the Community Generator Customer's bill.

The Community Generator Customer is responsible for paying any balance owing after the application of the Community Generation Credit to the Community Generator Customer's distribution Service account.



Community Generation Rate (RS 2290)

Eligibility Criteria



Minimum of 2



Benefiting customers can be located **anywhere in the Province**, as long as they are BC Hydro customers



Must use a clean or renewable resource (defined by the [Clean Energy Act](#) e.g. solar, wind, hydro, biomass, etc.).

Not for existing independent power producers



July 1, 2026

Shared generating facility must be constructed **no earlier than July 1st, 2026**

Existing generating facilities under Net Metering Rate are not eligible, but can **expand to qualify**




Net Metering / Self-Generation customers **cannot be benefiting customers simultaneously**


Can only participate in **one shared generating facility at a time**



Self-generation Rate and Community Generation Rate

Rebates & Incentives

	Generation Size <i>(inclusive of battery)</i>	Rebates & Incentives	Generation credits	Eligible customers
Self-generation Rate (RS 2289) 	1 – 100 kW Name plate capacity	Solar & Battery Rebates	Available for net injection up to 100kWac per phase	<ul style="list-style-type: none"> Residential Commercial Industrial
	100+ kW Name plate capacity	Minimum of 25,000kWh to be eligible for load displacement incentive	Apply for Self-Generation Rate for the portion of solar PV generation injected into the grid (subject to 100 kWac per phase injection limitation)	<ul style="list-style-type: none"> Commercial Industrial

	Generation Size <i>(inclusive of battery)</i>	Rebates & Incentives	Generation credits	Eligible customers
Community Generation Rate (RS 2289) 	1 – 100 kW Name plate capacity	No rebates or incentives offered		
	100+ kW Name plate capacity	Minimum of 25,000kWh to be eligible for load displacement incentive	Apply for Community generation rate for the portion of solar PV generation injected into the grid (subject to 2MW injection limitation)	<ul style="list-style-type: none"> Commercial Industrial

*** Existing load-displacement incentive recipients remain eligible IF they expand their generating capacity.



Self-generation Rate and Community Generation Rate

Key Differences

	Self-Generation (RS 2289)	Community Generation (RS 2290)
Maximum Net Injection	Up to 100kW per phase	Up to 2 megawatt (MW), depending on the number and type of your benefitting customers; 24 kW for each residential customer, 100 kW for each commercial customer
Who should participate?	Residential or commercial customers, generating for <u>their own</u> home or business	Residential or commercial customers with a shared generating facility and <u>a minimum of two</u> benefitting customers participating
Rebates & Incentives	<ul style="list-style-type: none"> ✓ Rebates ✓ Load Displacement Incentives (For commercial or industrial customers only) 	<ul style="list-style-type: none"> ✓ Load Displacement Incentives (For commercial or industrial customers only)
Load requirement	Must serve on-site load	Facility can export 100% of generation
Billing structure	Net billing, where customers are billed on consumption minus generation	Net billing, where customers are billed on consumption minus generation, and bill credits can be allocated to subscribers based on their share of exported energy.



Self-generation Rate and Community Generation Rate

Application & Process Changes

1 Select between the two Customer Generation options:

NOTE:
The updated application portal will open on July 16, 2026, and until that date, applications will only be accepted from Self-Generation customers applying for systems under 100 kW.

[← Return to dashboard](#)

Energy generation and storage

I would like to apply for...

Self-generation

For individuals or businesses installing a new or expanded generating system for a single account.

Apply here if you are interested in:

- Self-generation for an individual account
- Solar and battery rebates
- Load displacement incentives (Industrial and large commercial customers only)

[Start a new application](#)

Community generation

For individual or businesses interested in setting up a shared facility to provide electricity benefits to subscribing customers.

Apply here if you are interested in:

- Hosting a community generation facility
- Acquiring and managing a list of subscribing customers
- Load displacement incentives (Industrial and large commercial customers only)

[Start a new application](#)

Continue draft

If your contractor has already started an application for your self-generation project, you can complete it online now.

You'll need the application number, which you would have received via email.

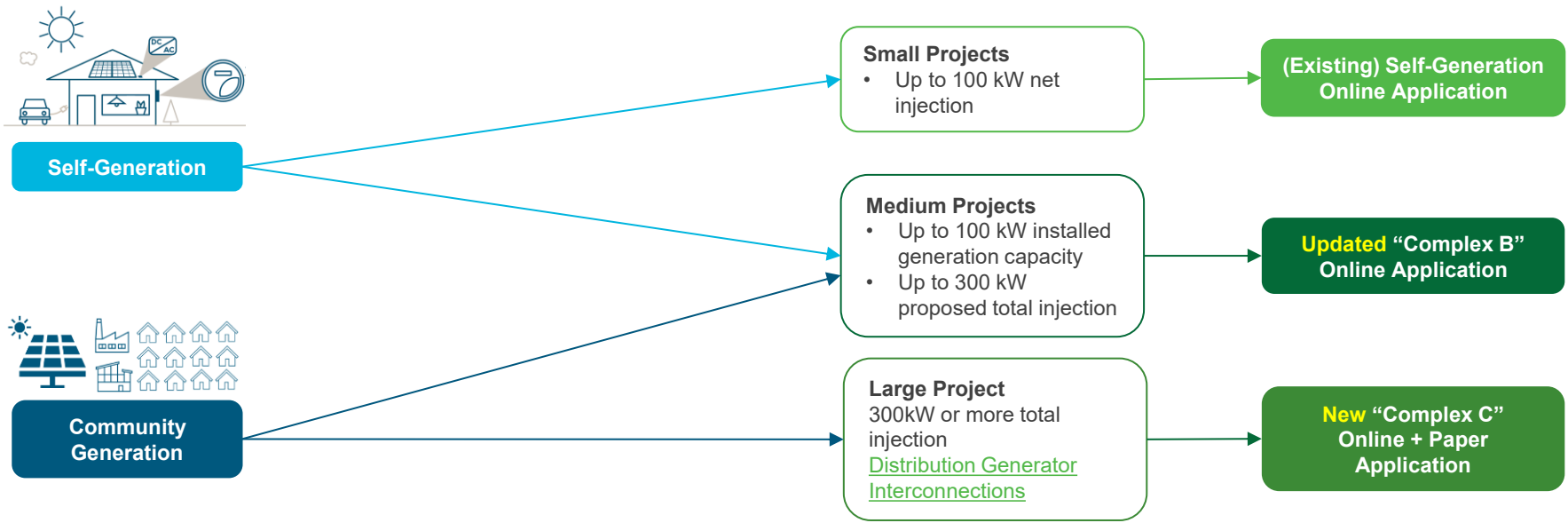
[Continue draft →](#)



Self-generation Rate and Community Generation Rate

Application & Process Changes

2 Complete corresponding application form (depending on selected option & project size)



NOTE: The updated application portal will open on **July 16, 2026**, and until that date, applications will only be accepted from Self-Generation customers applying for systems under 100 kW.



Self-generation Rate and Community Generation Rate

New Application Requirements:

- Any distribution-connected generating facility with a nameplate capacity greater than 100 kW must submit a single-line diagram that is authenticated sealed and signed by a professional engineer licensed to practice in BC.
- If the total nameplate capacity of your system exceeds the proposed injection amount, a monitoring device connected to the power flow control system is required to limit the net power sent to the grid.
- The application system will only allow applicants to submit qualified equipment including inverters and monitoring devices that has been pre-approved by BC Hydro. Any new equipment not yet on the qualified list will undergo a separate review process, and applicants will not be able to submit an application until that equipment has been approved.



Community Generation Rate

Community Generator Applicants must provide the following prior to interconnection approval:

- **Benefitting Customer details**
 - the list of all customers who will receive bill credits, including account information.
- **Benefitting Customer Authorization Forms**
 - signed consent from each Benefitting Customer confirming participation.
- **Community Generator description**
 - a summary of the generating facility, including technology, size, location, and ownership.

*** Templates for all required documents will be made available to Community Generator applicants.



Next Steps

- Another webinar will be held in July/August (date TBD) to walk through the application screens, bill examples and provide guidance on completing the submission.
- Reminder, the updated application portal will open on July 16, 2026, and until that date, applications will only be accepted from Self-Generation customers applying for systems under 100 kW.
- More information can be found on bchydro.com at the below links. Further updates will be made upon rates launch on July 1st.
 - [Customer generation service rates](#)
 - [Self-Generation](#)
 - [Rebates](#)
 - [Load Displacement Incentives](#)
 - [Distribution Generator Interconnections](#)







BC Hydro

Power smart